



Reliable Roots

PEC'S PLANTING GUIDE HELPS ENSURE SAFE, RELIABLE POWER

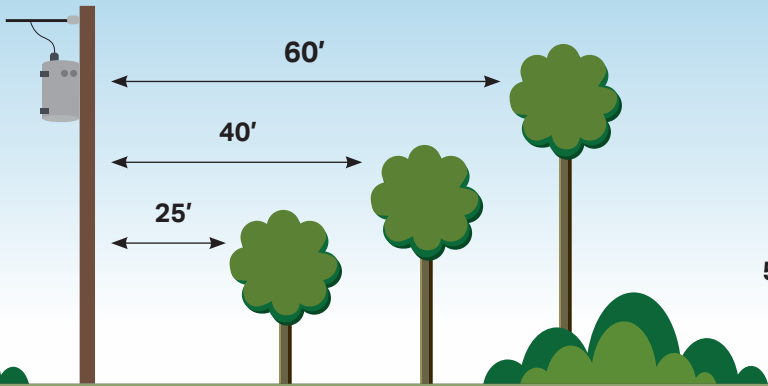


Spring is here and many of our members will freshen up their landscaping by getting new plants in the ground. When making plans for your plants, it's easy to overlook the impact they could have on your electric service. PEC's handy guide is here to help!

When bad weather hits, many outages are caused by vegetation coming into contact with PEC equipment. Following this guide is an opportunity for you to make your service more reliable and the job safer for our lineworkers.

RIGHT TREE, RIGHT PLACE

As a homeowner, you want your trees to be strong and healthy — so do we! Help protect your plants; never allow trees, bushes, or plants of any size to grow directly under electric lines. Before planting, consider the mature size of the species you've selected; falling trees and branches may cause outages. Refer to this chart to see how far away your tree should be planted from power lines.



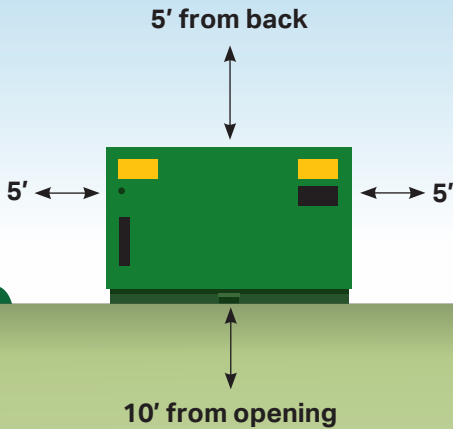
Less than 25' mature height

25-40' mature height

More than 40' mature height

PLANTING AROUND UNDERGROUND EQUIPMENT

To work safely, lineworkers require ample space around underground electric equipment. When planting near the green or gray metal boxes called pad-mounted transformers, leave a 10-foot clearance in front and a 5-foot clearance around the sides and back. This equipment is connected to the electric system, so use caution!



GET 'EM A TRIM

Check the trees on your property; if any branches are hanging over or at risk of falling into power lines or the service drop to your home, request free trimming from PEC through your online account or by calling us at 888-554-4732. Never trim trees near electrical equipment yourself!

These practices not only keep you and our crews safe — they also help us get the power back on as quickly as possible during an outage. Together, we can grow reliability from the ground up!

DIAL 811 BEFORE YOU DIG

Power lines and other utilities can be anywhere underground. Always call 811 before you dig. It's the law — and it could save your life. Learn more at [Texas811.org](https://www.texas811.org).





Preserving Beauty, Ensuring Reliability

PEC VEGETATION MAINTENANCE PROMOTES PREPARATION, CONSERVATION

While PEC's mission is to keep your electric service reliable, we also work hard to keep the Texas Hill Country beautiful and protect its native plants and trees. That's why our vegetation maintenance team works year-round to ensure our power lines stay free of tree limbs and our easements stay beautiful.

TREE TRIMMING

One way we protect your service is by directionally pruning our native trees. This technique ensures the trees stay healthy as they grow while reducing the likelihood of tree-to-line contact.

"Along with the general well-being of the Hill Country landscape, this offers the best possibility for safe and reliable power delivery," Vegetation Maintenance Manager Ryan Krause said. "Removing incompatible vegetation allows for better line-of-sight and access for our lineworkers while significantly reducing fire threat."

Our tree-trimming program is data-driven with the use of LiDAR technology to ensure we're prioritizing the areas that need attention most.

Our crews also reduce stem count (small



vegetation) to limit future maintenance. Trimming work is scheduled year-round, adhering to Texas A&M Forest Service and ANSI A300 standards. Members may be notified through letters, emails, calls, and door notices ahead of time, and we are available to address any specific concerns.

LIDAR TECHNOLOGY

Since 2021, we have been using LiDAR — a laser-based, remote-sensing technology — to measure distances and identify vegetation risks. It has helped improve our planning, minimize member disruptions, and enhance our efficiency.

"These spans are categorized and prioritized based upon severity, affected members, and Wildland Urban Interface (WUI) areas." – Ryan Krause, Vegetation Maintenance Manager

The use of this technology has been beneficial to members, as it has lessened notification and access burdens while allowing crews to quickly resolve potential vegetation issues.

EASEMENTS

Another area of focus is our easements. These are the grassy, open spaces under

our power lines. Keeping them maintained grants easy access to infrastructure for our lineworkers and provides a staging space for emergency personnel when needed. Crews prioritize mowing for easements near subdivisions while using herbicides elsewhere to control invasive species and encourage native plant growth.

Mowing is performed on a case-by-case basis. In easements adjacent to subdivisions, our ultimate goal would be to prepare the land for native grass and wildflowers to grow.



Crews usually don't mow easements with compatible vegetation unless absolutely necessary to prevent the disruption of native species' habitats.

"We understand that what may look like an ugly bush to some, other species call it home," Krause said.

Our vegetation maintenance practices benefit every member and native species in our 8,100-square-mile plot of the Texas Hill Country. With conservation and preparation, we are able to keep your lights on and our wildlife thriving. Learn more about our vegetation practices at myPEC.com/vegetation.



Want to Help Power PEC's Future?

RUN FOR THE BOARD OF DIRECTORS

PEC members in districts 4 and 5 have an opportunity to shape the cooperative's future by running for a seat on the PEC Board of Directors.

Interested candidates must deliver all original completed petition materials to the election team at PEC Headquarters, located at 201 S. Ave. F in Johnson City, to arrive no later than 5 p.m. on March 24.

If you are interested in running or voting, but are unsure what district you are in, you can

find your voting district on the bill of your primary account beneath your name in the right corner under 'Director District.' Your board director district is determined by the location of your primary account.

If you have multiple accounts and are unsure which district is assigned to your primary residence, give us a call at 888-554-4732.

To learn more about the nomination process, go to myPEC.com/election.



Save More with Auto Pay and Paperless

MAKE THE SWITCH TO SAVE UP TO \$30 ANNUALLY

Did you know there is a way to save while you pay your electric bill? It's simple! Enroll in automatic bank draft payments, and you'll save \$1.50 each month. Set it and forget it! Auto pay is safe, secure, and gives you one less thing to worry about.

If you want to save even more, opt for paperless billing to keep an extra \$1 each month. That adds up to \$30 per year in savings!

Log in to your account at myPEC.com/autopay or call our automated pay line at 855-938-3589 to enroll today. Have questions? Contact an agent from 8 a.m. to 5 p.m., Monday through Friday, at 888-554-4732.

Apply for a PEC Scholarship by March 12



PEC is helping to empower the leaders of tomorrow by offering scholarships to local students and qualifying adults looking to further their education. We encourage graduating high school seniors and eligible adults to apply. This year, \$100,000 will be awarded to students within our service area. These scholarships are funded by unclaimed property returned to PEC by the state.

Learn more at myPEC.com/scholarships.